



TSX-V: TBLL  
OTCQB: TBLLF



## INVESTOR PRESENTATION – NOV. 2021

DEFINING OUR MINERALISATION, EXPANDING GERALDTON  
GOLD CAMP'S RESOURCE TO ITS POTENTIAL

[WWW.TOMBILLMINES.COM](http://WWW.TOMBILLMINES.COM)

# COMPANY DISCLAIMER



## Introductory Cautionary Notes

Tombill Mines Limited ("Tombill") has taken all reasonable care in producing and publishing information contained in this presentation and website, and will endeavor to do so regularly. Material may still contain technical or other inaccuracies, omissions, or typographical errors, for which Tombill assumes no responsibility. Tombill does not warrant or make any representations regarding the use, validity, accuracy, completeness or reliability of any claims, statements or information on our site. Under no circumstances, including but not limited to, negligence, shall Tombill be liable for any direct, indirect, special, incidental, consequential, or other damages, loss of programs, loss of data, loss of use of computer or other systems, or loss of profits, whether or not advised of the possibility of damage, arising from your use, or inability to use, the material on our site. The information is not a substitute for independent professional advice before making any investment decisions. Furthermore, you may not modify or reproduce in any form, electronic or otherwise any information on our site, except for personal use unless you have obtained our express permission. The technical content of this presentation has been reviewed by Mr. Tim Twomey, P. Geo, a Qualified Person as defined by Canadian Securities Administrators National Instrument 43-101 "Standards of Disclosure for Mineral Projects."

The TSX Venture Exchange has not reviewed the information on our website and do not accept responsibility for the adequacy or accuracy of it.

## Forward-looking Statements

This presentation contains certain forward-looking statements as defined in the applicable securities laws. All statements, other than statements of historical facts, are forward-looking statements. Forward-looking statements are frequently, but not always, identified by words such as "expects", "anticipates", "believes", "hopes", "intends", "estimated", "potential", "possible" and similar expressions, or statements that events, conditions or results "will", "may", "could" or "should" occur or be achieved. Forward-looking statements relate to future events or future performance and reflect Tombill management's expectations or beliefs regarding future events and include, but are not limited to, statements with respect to the estimation of mineral reserves and resources, success of mining operations, the timing and amount of estimated future production, and capital expenditure.

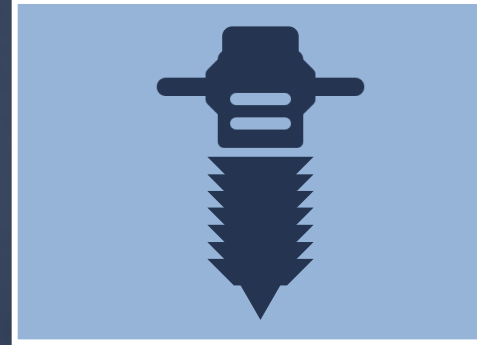
Although Tombill believes the expectations expressed in such forward-looking statements are based on reasonable assumptions, such statements are not guarantees of future performance. The actual achievements of Tombill or other future events or conditions may differ materially from those reflected in the forward-looking statements due to a variety of risks, uncertainties and other factors.

These risks, uncertainties and factors include general business, legal, economic, competitive, political, regulatory and social uncertainties; actual results of exploration activities and economic evaluations; changes in costs; future prices of gold and other minerals; delays in exploration, development and any construction activities; changes in government legislation and regulation; the ability to obtain financing on acceptable terms and in a timely manner or at all; contests over title to properties; employee relations and shortages of skilled personnel and contractors; the speculative nature of, and the risks involved in, the exploration, development and mining business.

## Adjacent Property Disclosure

The slides which follow are heavily reliant on disclosure related to properties adjacent to Tombill, and specifically the Hardrock Project which is discussed in detail. The qualified person for Tombill has been unable to verify the information contained in the adjacent property disclosure, and that the information is not necessarily indicative of the mineralization on the Tombill property. The disclosure related to the measured and indicated resource estimates on the adjacent Hardrock Property is based on a technical report on such property dated December 21, 2016 and filed on SEDAR by Premier Gold Mines Ltd. on December 22, 2016; and announcement of the results of an updated and Optimized Positive Feasibility Study for the Hardrock Project December 16, 2020, filed on SEDAR.

# INVESTMENT HIGHLIGHTS



- Royalty-free patents in Geraldton Camp surrounded by - and on strike with – world class Greenstone Mine
- Confirmed extension of F-Zone over 283m (TB21-005A/B/E) down plunge from border at multiple intervals including:
  - Weighted 6.01g/t over 46.0m
  - 6.24g/t over 13.3m
  - 5.29g/t over 8.0m
  - 8.15g/t over 4.1m
- Neighbours plunge over us~4.6 km strike:
  - 5.5Moz P&P / 7.1Moz M, I (incl of mineral reserves) / 3.1Moz Inferred +2.1 Moz past gold produced (1938-70)
  - Kailey and Key Lake resource of 700k
  - Most westward hole on border: 18.49 g/t over 20.5m
- FZone strike has consistent dimensions of:
  - 25-35m width
  - 100-150m height
  - Just over 6g/t
  - Density ratio of 2.7x
- Goals:
  - Defining our mineralization
  - Continue expanding the Geraldton Camp's resource
- Specifically targeting
  - Continue establishing high-grade F-Zone continuity up to 2.5km from border
  - Seek surface options
- 3-Part program commenced in January 2021:
  - Deep drilling extension along established F-Zone strike
  - Near-surface drilling starting at the past-producing Talmora mine
  - Channeling/Surface geology North of Trans Canada
- Experienced Management Team: 3 senior geologists / executives instrumental in the execution and success of the Hardrock campaign
- 90+ years of collective mining & exploration experience
- Cash Position = CAD\$3.5M
- Family & Insiders own 61% of the company
- December 2020: 100% of Greenstone was divested, of which Centerra's 50% interest yielded US\$225M + US\$75M contingency

# TOMBILL/GERALDTON CAMP RESOURCE & EXPLORATION



## GOLD RICH HISTORY - CONTINUING - WITH NEW SIZABLE RESOURCES

**Tombill: “Donut Hole” within World Class Gold Mine under Construction**

**Greenstone Mine/Hardrock: Historical district mining + current resource estimates over 4.6km<sup>(1)</sup>**

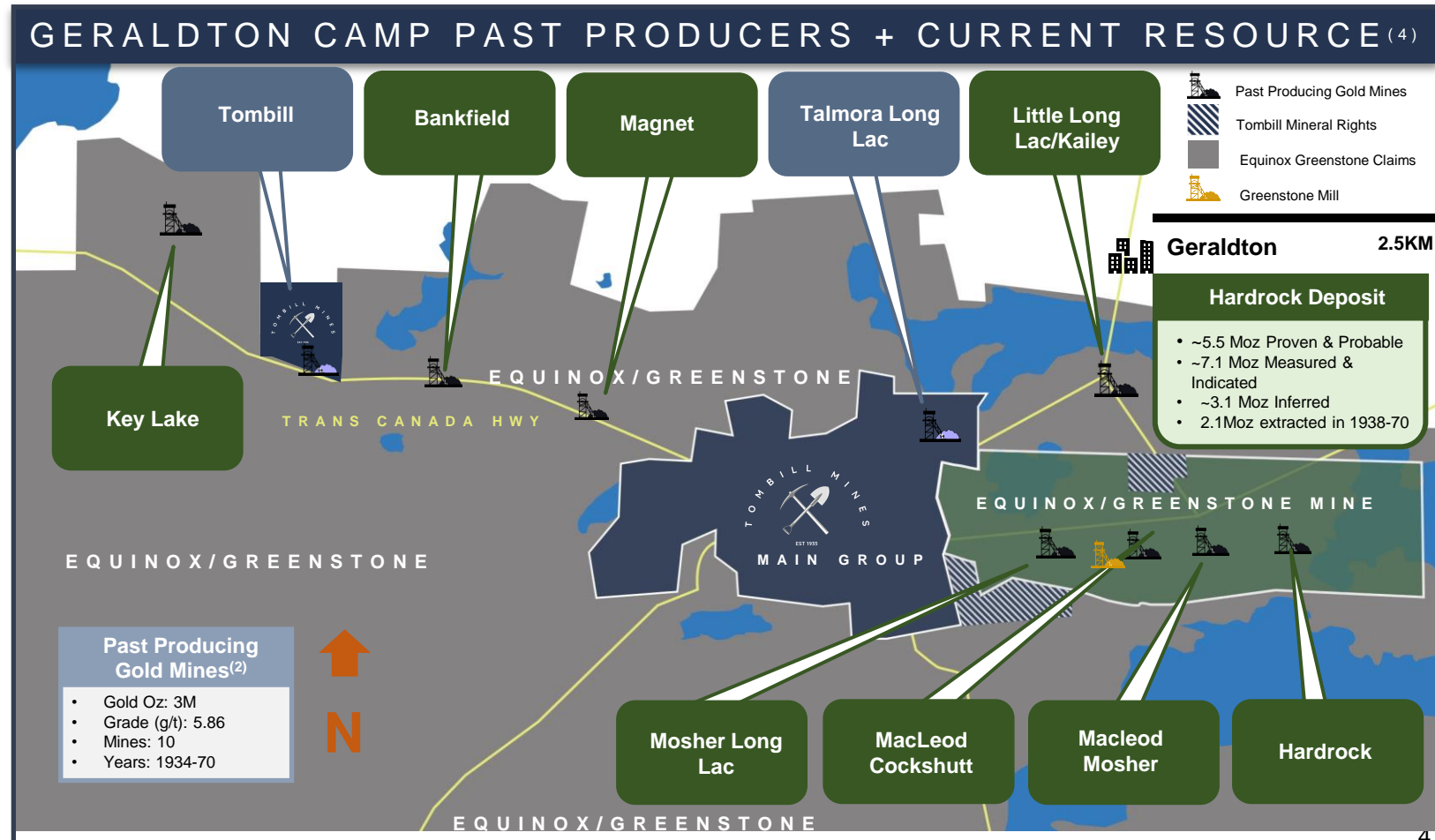
- 5.5Moz Proven & Probable
- 7.1Moz Measured & Indicated (inclusive of mineral reserves)
- 3.1Moz Inferred
- 2.1 Moz mined 1930’s-70’s<sup>(3)</sup>
- 17+ targets delineated<sup>(3)</sup>
- Hole of 18.49g/t over 20.5m (MM170) closest to our east boundary<sup>(2)</sup>

**Other Immediate Geraldton Camp Highlights**

- Kailey/Little Long Lac + Key Lake 0.7 Moz lower grade resource<sup>(1)</sup>
- 0.9Moz mined outside Hardrock. 10 past producing mines extracted 3Moz high grade<sup>(3)</sup>

**Tombill: Over 283m from boundary established 46m intercepts at a weighted 6.01g/t Au**

- June 2021, Tombill establishes open down plunge continuity from neighbour with **TB21-005A; 6.24g/t over 13.3m. Some 250m from border/400m from MM170**

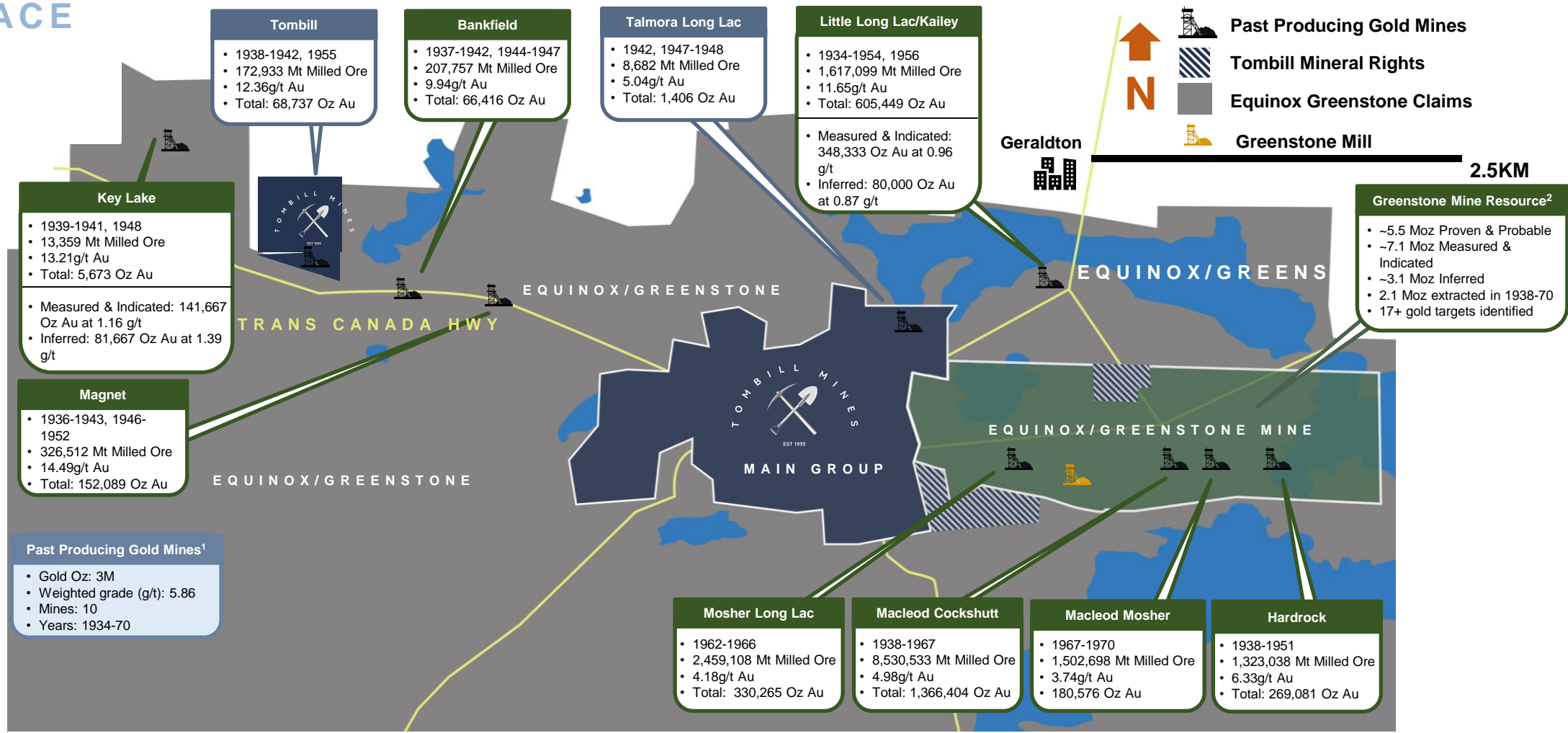


**SOURCE:**  
 (1,4, 5) Equinox Gold Presentation dated Oct 15, 2021. Grossed up to 100% as it is noted at 60% in presentation reflecting Equinox ownership; (2) Premier Gold Press Release (Nov 4, 2010); (3,4) Innovexpl 2015

# GERALDTON GOLD CAMP PAST PRODUCERS: 1934-70



## HIGH GRADE EXTRACTED. LIMITED FOCUS HISTORICALLY ON LOW GRADE NEAR SURFACE



Source: (1) Innovexplor 2015  
(2) Hardrock resource - Equinox presentation (Oct-15, 2021)

# OUR LOCATION: GERALDTON GOLD CAMP



## “DONUT HOLE” IN THIS WORLD CLASS RE-AWAKENED GOLD CAMP

### LARGE TOWN, INFRASTRUCTURE, DONUT HOLE IN GERALDTON GOLD CAMP



**Tombill: founded 1935**

**Footprint: 3,050+ Acres with Until Now Sparse and Antiquated Historical Exploration**

- Tombill Main Group sandwiched amongst the past-producing mines and new Greenstone mine

**All claim's royalty-free**

- **74 claims:** 60 are 100% owned/patents; 5 leased; and 9 mineral rights only

**Greenstone Mine started construction<sup>(1)</sup>**

- Est. to be one of largest gold producers in Canada at 400,000 oz Au/year
- Mining to commence Q4 2022
- Pour gold H2 2024

**Geraldton: Superior Location/Optimal Jurisdiction**

- 275 km by Trans Canada Hwy to Thunder Bay
- Supportive Pop.
- Greenstone mine will add further infrastructure to access: mill ore of 28k TPD, tailing facility....

**SOURCE:**

(1) Equinox press release 27.10.21

# ON STRIKE WITH HARDROCK, INCLUDING F-ZONE



## F-ZONE, OVER HARDROCK: 6GPT+; 30 X 125M DIMENSION; ~4.3KM STRIKE

### Greenstone Mine: Dimension of F-Zone (1) (2)

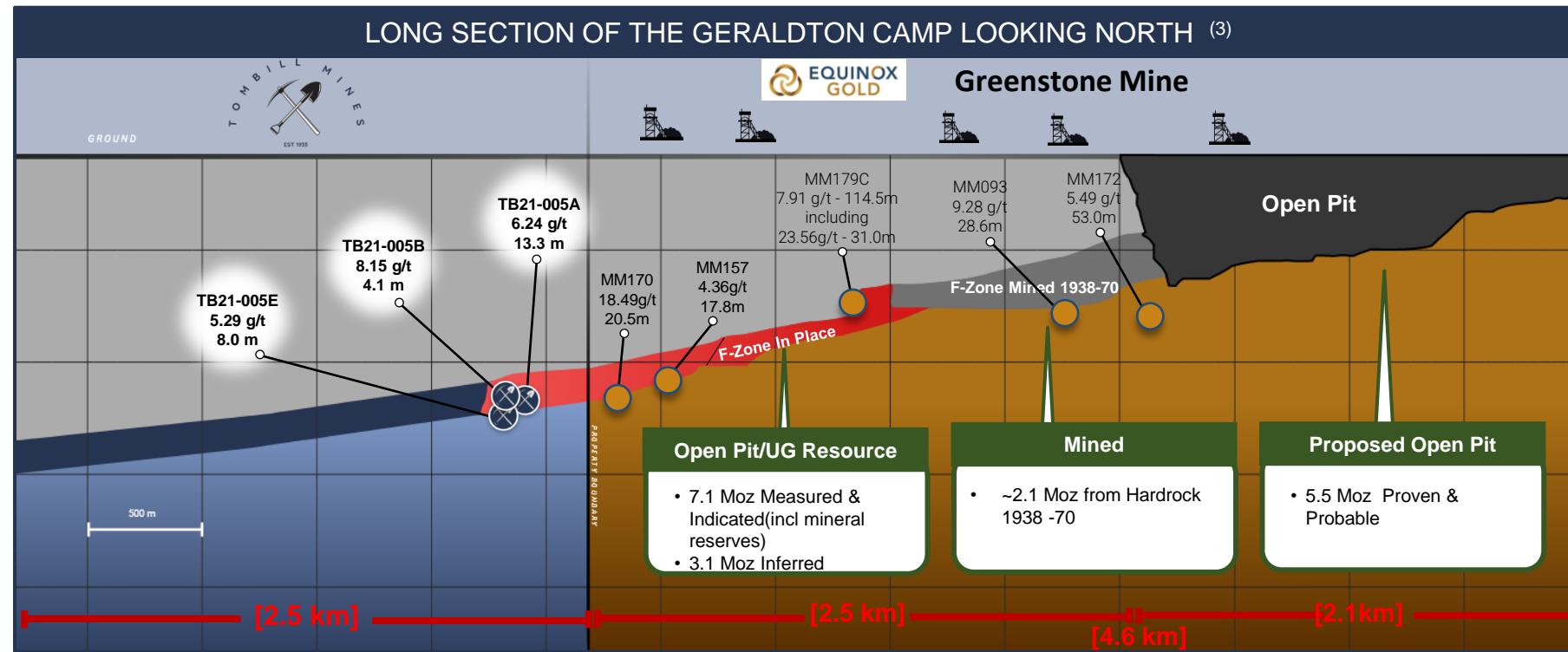
- Gpt: Above 6 g/t
- Height: 100 - 150m
- Width: 25 - 35m
- Density ratio: 2.7x
- Strike: 4.6km, plunging east to west

### Tombill: Proving F-Zone plunge over our 2.5KM strike. To date, 46m intercepts at weighted 6.01g/t up to 283m from border, of which:

- Hole 5A: 6.24g/t – 13.3m
- Hole 5B: 8.15g/t -- 4.1m
- Hole 5E: 5.29g/t -- 8.0m  
13.88g/t -- 2.0m(F2-Zone)  
9.17g/t – 3.0m(F2)

- Strike: 283M from our border, 433M from Hardrock's most Westward Hole MM170 (18.5g/t – 20.5m)

- Results and lithologies consistent with Hardrock's



#### SOURCE:

- (1) InnovExplo Report (July 4, 2014)
- (2) Technical Report by Tim Twomey (July 17, 2020)
- (3) Premier press release (November 4, 2010)

\* This table contains information related to properties adjacent to Tombill, and specifically, the Hardrock Project. The qualified person for Tombill has been unable to verify the information contained in the adjacent property disclosure, and cautions that such information is not necessarily indicative of the mineralization on the Tombill property. See "Adjacent Property Disclosure" disclaimer.

# F-ZONE LITHOLOGY SIMILAR TO HARDROCK



NOTE DEFORMED WHITE QUARTZ VEINS IN GREYWACKE

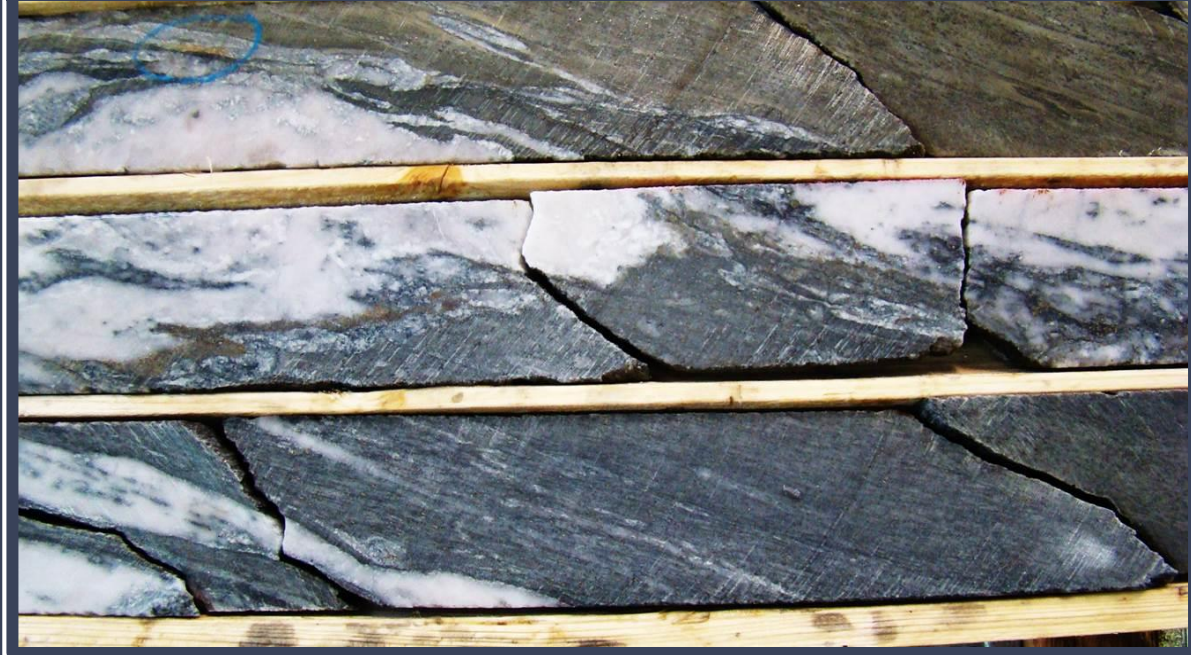
## F-ZONE INTERCEPTS

TOMBILL



Part of F-Zone drill intercept at **Tombill** from drill-hole **TB21-005A** at around 1105 m down-hole

HARDROCK



F-Zone mineralization in core from **Premier Gold Mines Limited (Hardrock)**, 2011



# OUR RESULTS CONFIRM EXTENSION OF F-ZONE & OTHER ZONES DOWN PLUNGE

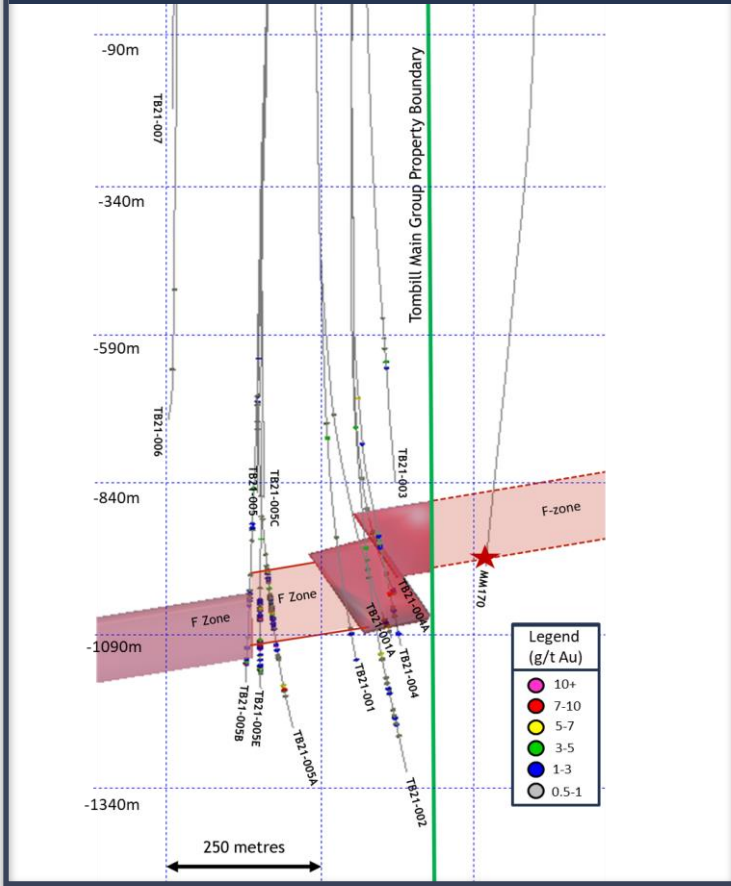


**STRIKE 283M; INTERSECTED 46M; WEIGHTED 6.01G/T**

## SIGNIFICANT RESULTS OF PHASE 1 DRILL PROGRAM TO DATE

Hole-ID 46M	From (m)	To (m)	Length (m)	Au (g/t)	Zone
TB21-001A	1191	1192	1.0	6.03	F
TB21-002 (drilled below F-Zone)	768	769	1.0	4.21	HW
	1203	1203.8	0.8	6.90	K
TB21-004	757.7	758.7	1.0	5.29	UM
	1242.4	1244.5	2.1	4.50	F
TB21-005A	1018.5	1022.7	4.2	2.99	SP
	1078	1081.5	3.5	2.05	F
	1095	1108.3	13.3	6.24	F
TB21-005B	1214.0	1218.1	4.1	8.15	F
TB21-005E	1085.0	1087.0	2.0	6.08	F
	1102.0	1110.0	8.0	5.29	F
	1152.0	1154.0	2.0	13.88	F2
	1162.0	1165.0	3.0	9.17	F2

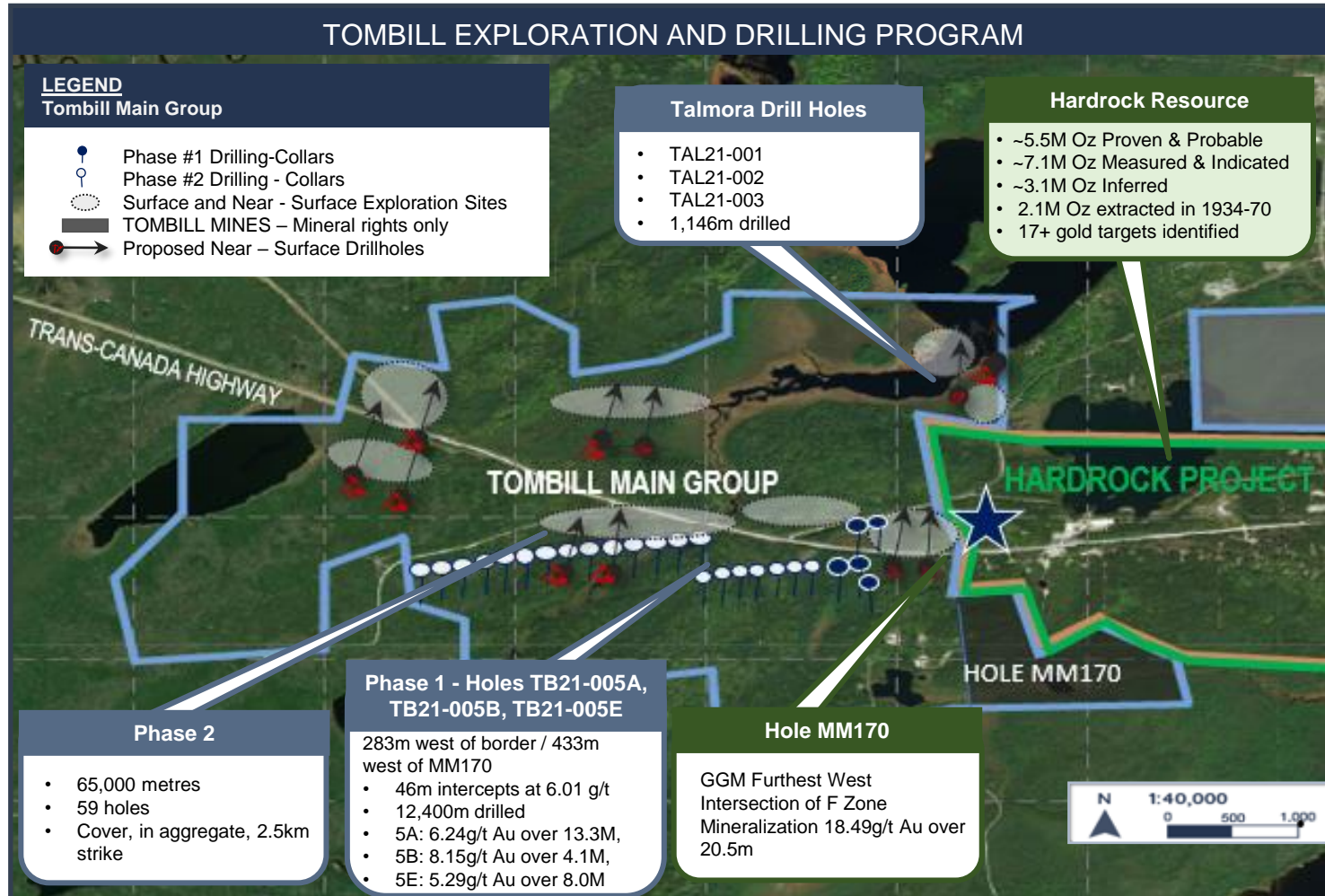
## LONG SECTION VIEW OF DEEP DRILLING TO DATE



# OUR EXPLORATION PROGRAM



## COMBINATION OF CHANNELLING, NEAR-SURFACE / DEEP DRILL PROGRAMS



Until Jan 2021, Tombill saw no exploration since the 1970's

### Phase 2 Exploration Program:

- Phase 1 deep drilling program of ~12,400/14 holes
  - Phase 2 of ~65,000m/59 holes; 2.5km strike plunging west from border
- Channeling/near surface geology covering 14 targets
- 1,146m of surface drilling (~400m/hole) over 3 holes
  - Phase 2 of ~10,000m/25 holes

### Further Potential for Lower-Grade Near-Surface Gold Deposits Historically Mined in the District

### Potential Targets from our Exploration Program

- Continuity of F-Zone strike now established on Tombill
- Open pit hope

# DEEP DRILLING PROGRAM



## DEEP DRILLING & NEAR SURFACE CAMPAIGN ON TOMBILL MAIN GROUP

### Last exploration of Tombill was in the 70's- very marginal

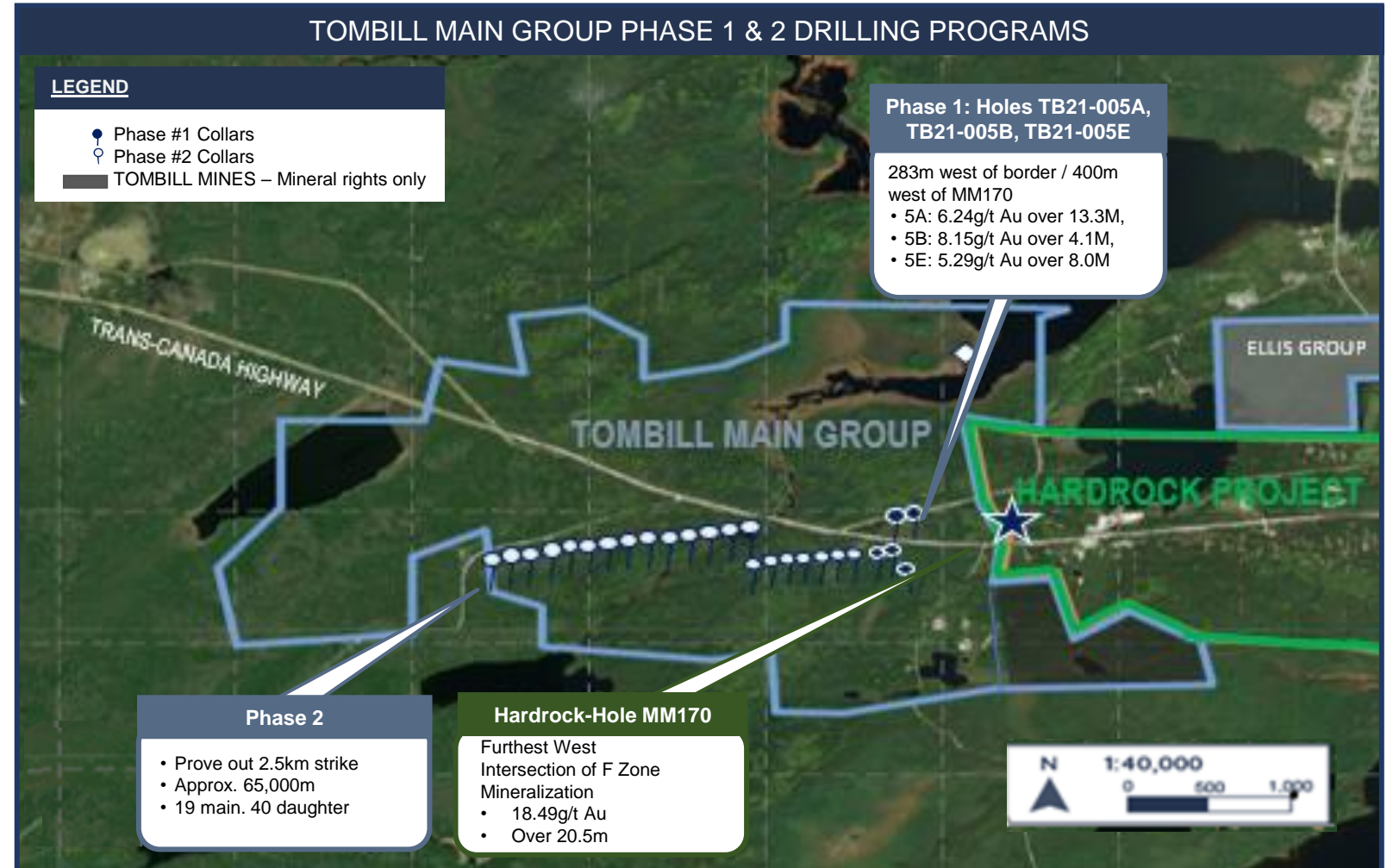
- Devoid of current geological exploration tools and techniques
- Jan 2021 - 1<sup>st</sup> deep drilling ever on Tombill

### Phase 1: ~12,400m/14 holes

- Up to 283m from border, extension of F-Zone established with similar attributes to Hardrock geology/resource
- 46m intercepts at 6.01g/t over 283m from border

### Phase 2: ~65,000m/59 holes

- Extend and follow F-Zone on strike from Phase 1 of 283m up to 2.5km
- Establish continuity/length of strike up to 2.5km, followed by in-fill of resource



# SHALLOW DRILL PROGRAM



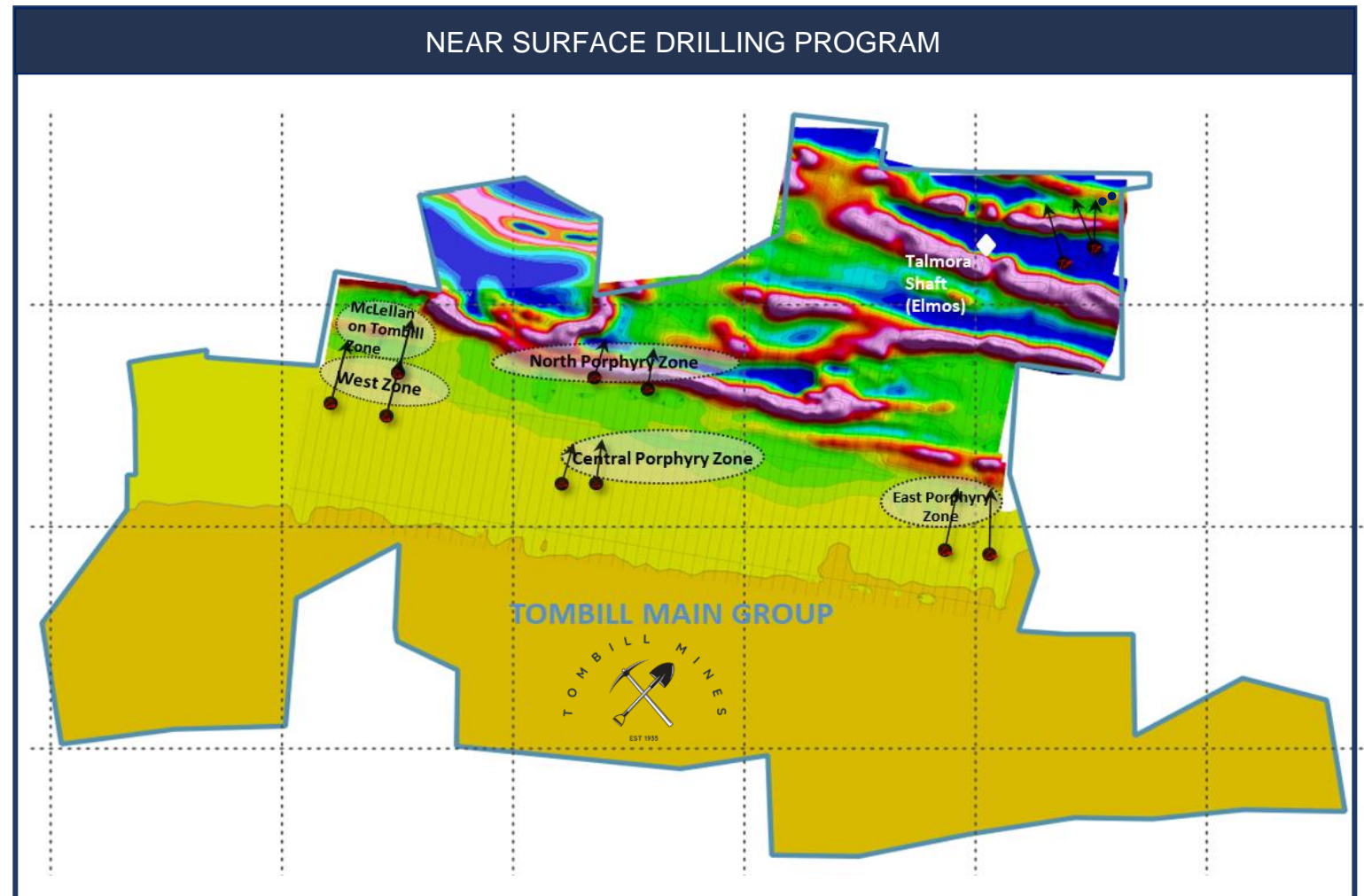
## COMMENCED SEPTEMBER 2021 AT TALMORA, OUR PAST PRODUCING MINE

### Phase 1:

- Drilled 3 holes over 1,146m, 300-450m / hole. Await assays
- Drilled around Talmora (NE corner), our past-producing gold mine
- UAV-MAG survey completed in Feb 2021 by Abitibi

### Phase 2:

- Near surface-drilling of ~10,000m over ~25 holes
- Evaluating 5 other shallow target areas via channeling and near surface geology



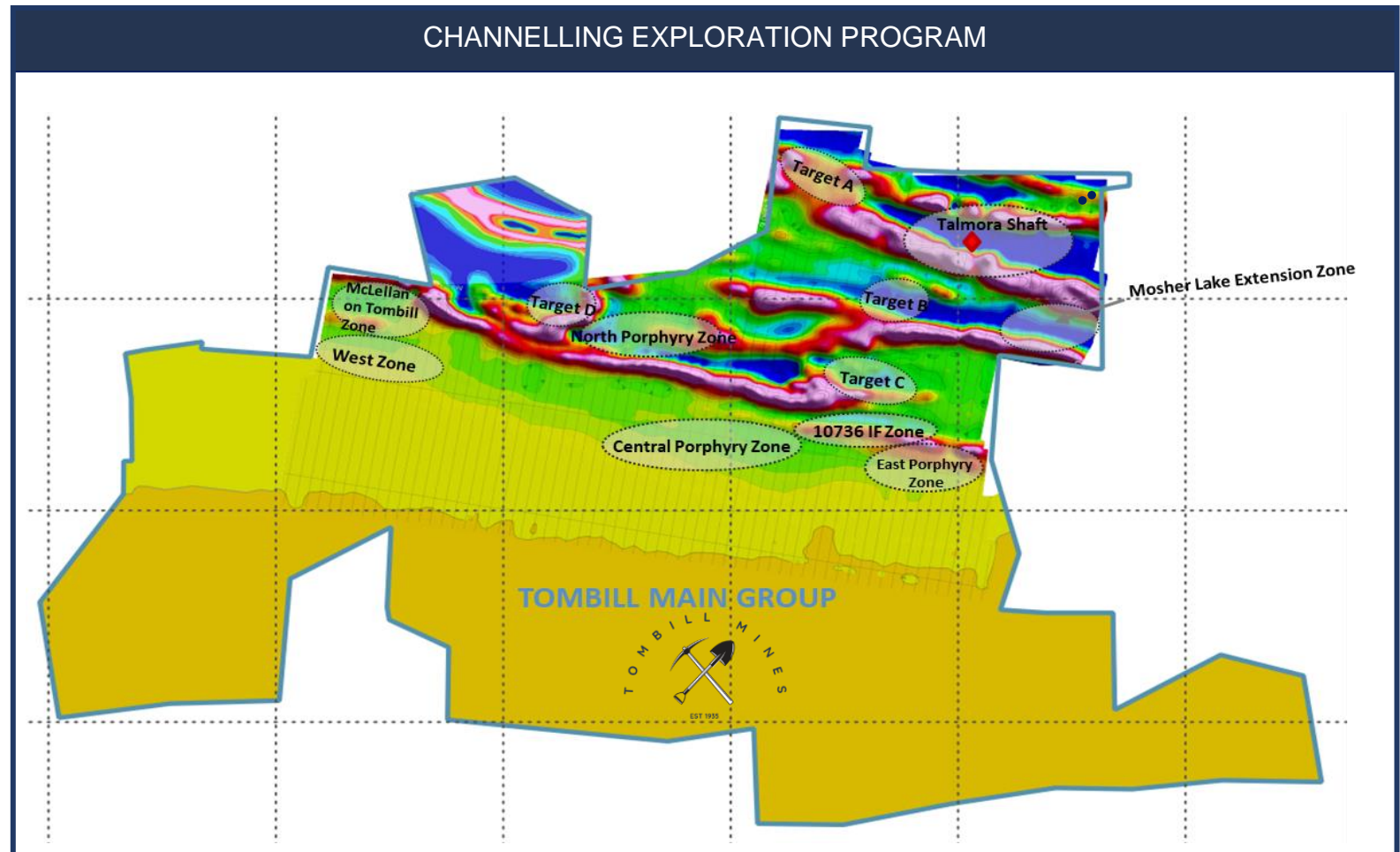
SOURCE:  
Abitibi Mag Study for Tombill—Feb 2021

# CHANNELING & NEAR SURFACE GEOLOGY PROGRAM



## 12+ EXPLORATION TARGETS IN NORTHERN HALF OF TOMBILL MAIN GROUP

- Tombill main group claims have not previously been explored for shallow low grade, potentially open pit, gold targets.
- Initial review by Tombill has defined multiple near surface targets which warrant follow-up exploration.
- Phase 1 involved mechanized overburden stripping followed by washing and channel sampling of surface showings.
- Phase 2 will involve continued prospecting, surface stripping, and potentially diamond drilling.



SOURCE:  
Abitibi Mag Study for Tombill—Feb 2021

# EXPERIENCED & PROVEN TEAM



## TOP NOTCH TEAM WITH UNPARALLELED KNOWLEDGE OF GERALTON CAMP

### MANAGEMENT

<b>Adam Horne</b>	CEO
<b>Tom Rowcliffe</b>	CFO
<b>Thanos Pythagoras</b>	Financial Controller
<b>Reda Jalabi</b>	IR & Corp. Development

### EXPLORATION

<b>Dave Laudrum</b>	Exploration Manager
<b>Michael Nerup</b>	Senior Geologist
<b>Kevin Sinnott</b>	Senior Geologist
<b>Holly Zhu</b>	Geologist
<b>Benjamin Cleland</b>	Consulting Geologist
<b>Tim Twomey</b>	Senior Advisor, Geology

### Team of Geotechs

### ADVISORY BOARD

<b>Quinton Hennigh</b>	Chmn & Pres. Novo Resources
<b>Gordon Reid</b>	Ex-COO of Centerra
<b>Ian Stalker</b>	Founder, Director, ex-CEO K92



### BOARD OF DIRECTORS

<b>Adam Horne</b>	Chairman
<b>John Alexander</b>	Director
<b>Ray Davies</b>	Director
<b>Giuseppe Ciardi</b>	Director
<b>Mark Colman</b>	Director

Incentivized & Seasoned Leadership

Local Knowledge: Hardrock Senior Geo Team + Ex COO of Centerra

Capital Markets & Cost of Capital Focused

Experienced, Involved Broad-Ranging Advisory & Board of Directors

Insiders own 61%, and all Advisory Board own or manage sizeable holding

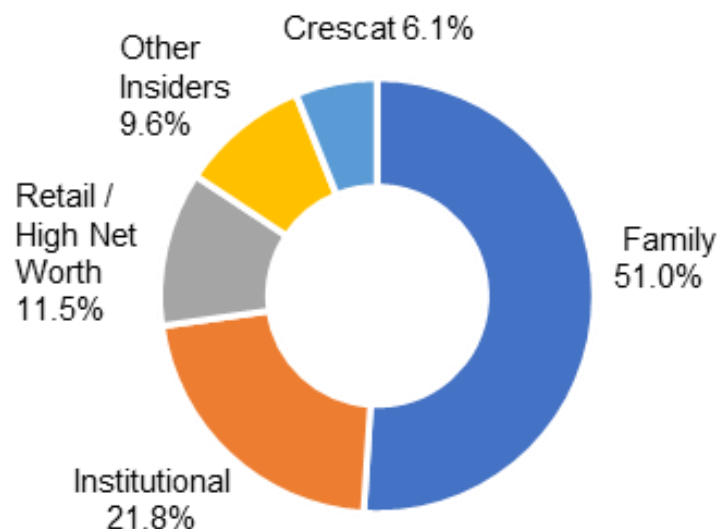
# CAPITAL STRUCTURE



## CAPITAL STRUCTURE

Shares Issued & Outstanding	153.8 M
Warrants (@ avg C\$0.24)	38.8 M
Options (@ avg C\$0.16)	9.3 M
Fully Diluted Shares	201.8 M
Cash	C\$3.5M
Debt	–

## SHAREHOLDER BASE



## INSTITUTIONAL HOLDERS



- Tombill has a broad shareholder base with strategic long-term shareholders and a balanced mix of institutional, high-net worth and retail investors.
- Insiders hold approximately 61% of the Company.

## LISTING

TSX-V	TBLL
OTCQB	TBLLF

# SUMMARY-RE CAP



## “CLOSEOLOGY” PLAY IN WORLD CLASS GERALDTON CAMP

- “Donut hole” surrounded by and on strike with Greenstone Mine
- Greenstone Mine-World class gold mine being built on door-step
- Starts mining H2 2022
- Gold pouring late 2024
- Produce 400,000oz Au per annum during 1<sup>st</sup> 5 years, making it one of the largest gold mines in Canada

## SIZABLE LOCAL GOLD MINERALIZATION ON STRIKE WITH TOMBILL

- Greenstone Mine deposit: 4.3km strike, of which:
  - 5.5M oz Proven & Probable (open pit)
  - 7.1M oz M + I; 3.1M Inferred (ug west plunge from open pit)
  - 2.1Moz extracted 1938-70
- 3.1Moz high grade mined in Camp from 1930's-70's
- Until Jan 2021, Tombill not explored since 1970's

## ESTABLISHED CONTINUITY OF STRIKE/RESOURCE OVER TOMBILL

- Established resource continuation with various holes up to 283m from our border. 46m significant assays weighted at 6.01 g/t
- Drilled shallower amongst our past-producing Talmora Mine
- Aim to make the Geraldton Camp a much larger resource pool

## TOP TEAM EXECUTING IN OPTIMAL MINING JURISDICTION/LOCATION

- “A” Team: Includes 3 sr geo's and execs who proved Hardrock and invested multi-millions of capital from 2008 to 2020
- Royalty-Free
- Own patents
- Ultimate Jurisdiction/Top Location
- No exploration permits required

## NEIGHBOUR VALUATION TARET

- Dec 2020, Centerra divest 50% interest (non control) to Orion; US\$225M + US\$75M

**TOMBILL IS  
UNIQUELY  
POSITIONED  
TO EXECUTE  
ON ITS PLAN  
& DELIVER  
VALUE TO OUR  
SHAREHOLDERS**





TSX-V: TBLL  
OTCQB: TBLLF

**Adam Horne**

*Chairman & CEO*

Office: +44 (0) 207 529 2351

Mobile: +44 (0) 7768 258 126

adam@tombillmines.com

**Reda Jalabi**

*Corp. Development & IR*

Office: +44 (0) 207 529 2361

Mobile: +44 (0) 7899 870 533

reda@tombillmines.com

**26 Grosvenor Gardens  
London , SW1W 0DH, UK**

Office: +44 (0) 207 529 2354

ir@tombillmines.com

WWW.TOMBILLMINES.COM



TSX-V: TBLL  
OTCQB: TBLLF



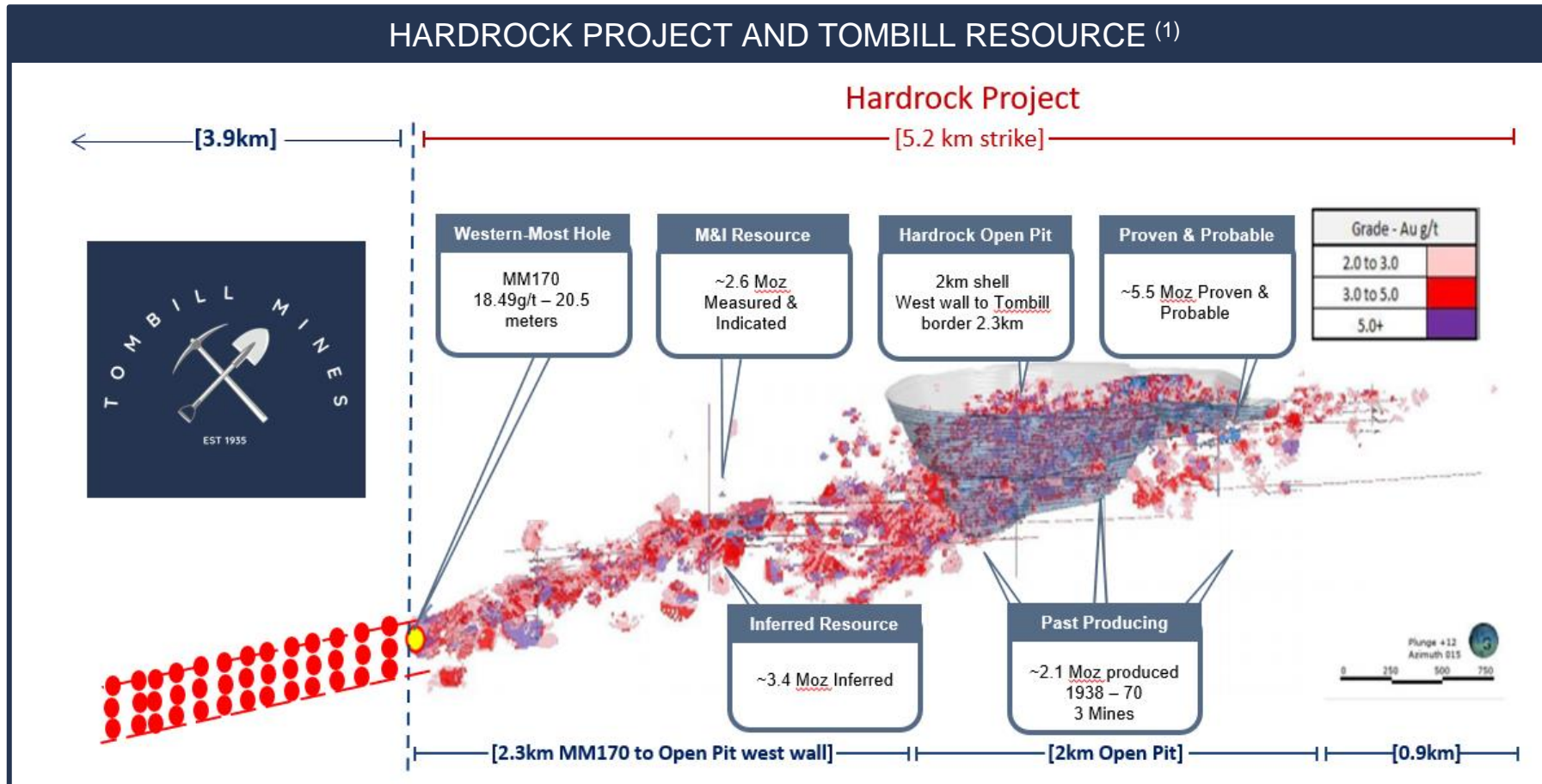
## APPENDIX

[WWW.TOMBILLMINES.COM](http://WWW.TOMBILLMINES.COM)

# ON STRIKE WITH MULTI-TARGETS & F-ZONE



MULTIPLE ZONES STEM WESTWARD ACROSS LARGE PART OF HARDROCK & CONFIRMED ON TOMBILL



# TOMBILL ORG CHART



## BOARD OF DIRECTORS

**Ray Davies**  
Director

**Mark Colman**  
Director

**Giuseppe Ciardi**  
Director

**John Alexander**  
Director

**Adam Horne**  
CEO, COB

## ADVISORY BOARD

**Gordon Reid**  
Ex-COO of Centerra

**Ian Stalker**  
Founder, ex-CEO K92

**Quinton Hennigh**  
Crescat

## FINANCE, CORPORATE, IR

**Reda Jalabi**  
IR

**Tom Rowcliffe**  
CFO

**Thanos Pythagoras**  
Financial Controller

## EXPLORATION, GEOLOGY

**Dave Laudrum**  
Exploration Manager

**Michael Nerup**  
Senior Geologist

**Kevin Sinnott**  
Geologist

**Holly Zhu**  
Geologist

**Tim Twomey**  
Sr Advisor, Geology

**Benjamin Cleland**  
Consulting Geologist

**Team of Geotechs**

# MANAGEMENT, BOD & ADVISORY BOARD



## **Adam Horne – Chairman & CEO**

Adam is Managing Partner of Caledon Partners, a hedge fund based in London. Prior, he ran the European Media Investment Banking Group at Credit Suisse First Boston in London, and was at Morgan Stanley in NY. At both firms, he executed many equity/debt financings and M&A transactions. He has sat on various other boards, and is a director of a large charitable foundation.

## **Tom Rowcliffe – CFO**

Tom is a chartered accountant with 14 years experience in mining and oil & gas. He has held senior positions at fast growing companies such as Trafigura and Endeavour Mining Corporation. Tom's experience in accounting and finance are complimented by his commercial exposure to precious metals royalties and refining & offtake agreements.

## **Dave Laudrum – Exploration Manager**

Dave is a Canadian Professional Geologist with over 30 years of experience on a wide range of mine production and advanced exploration projects with junior and senior mining companies. He has held roles including Project Manager, Chief Mine Geologist and Exploration Manager for a variety of companies. Prior to Tombill, Dave was the Technical Services and Mineral Resource Manager at Barrick Gold's Hemlo Mine in Marathon, Ontario.

## **Tim Twomey – Senior Advisor, Geology**

Tim is a professional geologist with over 35 years of exploration, production and mgmt expertise. Prior, he was VP Exploration for Premier Gold, leading the Hardrock Project from inception in 2008 until 2012. Also Tim was Sr. Geologist for Goldcorp at the Red Lake Mine and was involved in the discovery of the High Grade Zone there.

## **Giuseppe Ciardi – Director**

Giuseppe is an investment advisor to a European family office and has over 40 years of capital markets experience. He was a founding partner at a London-based hedge fund. Prior, he was a partner at BNP's Proprietary Trading desk, and Lazard's Capital Markets Group.

## **Mark Colman – Director**

Mark worked in investment banking and ECM for 25 years with Morgan Stanley (London, NY, Tokyo), Bear Stearns, and Bloomberg before founding his own financial advisory business, Alta Capital. He serves on a number of corporate and philanthropic boards. Graduate of Harvard and Harvard Business School.

## **Dr. Quinton Hennigh – Advisory Board**

Quinton is an eco geologist with 25 years of exploration experience and founder, Chmn and President of Novo Resources – a developing gold project in W. Australia. Prior to, Quinton explored for major mining firms including Homestake, Newcrest, and Newmont. He then joined the exploration mining sector in 2007 and has been involved with several Canadian listed gold companies.

## **Gordon Reid – Advisory Board**

Gordon has 40 years of experience in the mining industry working for many of the largest global mining companies in senior positions such as Noranda, Rio Algom, and Placer Dome. His last 15 years were at Centerra, the prior recent owner of 50% of Greenstone, including the Hardrock Project. There, Gordon held multiple and uniquely different leadership roles, ultimately becoming COO in 2013.

## **Ian Stalker – Advisory Board**

Ian is a senior international mining exec with over 45 years of experience in resource development. He has directed over 12 major gold, base metal, industrial minerals projects at various phases, from exploration drilling to start-up. Ian was CEO of LSC Lithium, and is Director of K92 Mining (which he founded and was CEO).

## **Ben Cleland – Consulting Geologist**

Ben is a geologist with over 12 years experience. He spent 6 years as a geologist at Greenstone and its Hardrock Project, of which from 2013 to 2016 he was Manager Geology, being the camp's sr exploration geologist. He graduated from Carleton.

## **Ray Davies – Director**

Ray is CEO of Talmora Diamond a diamond exploration company in the NWT. Previously Director of Corporate Geology for Hudson Bay Mining & Smelting and VP of Lytton Minerals. He has been on the Board and provided consulting services to many exploration companies.

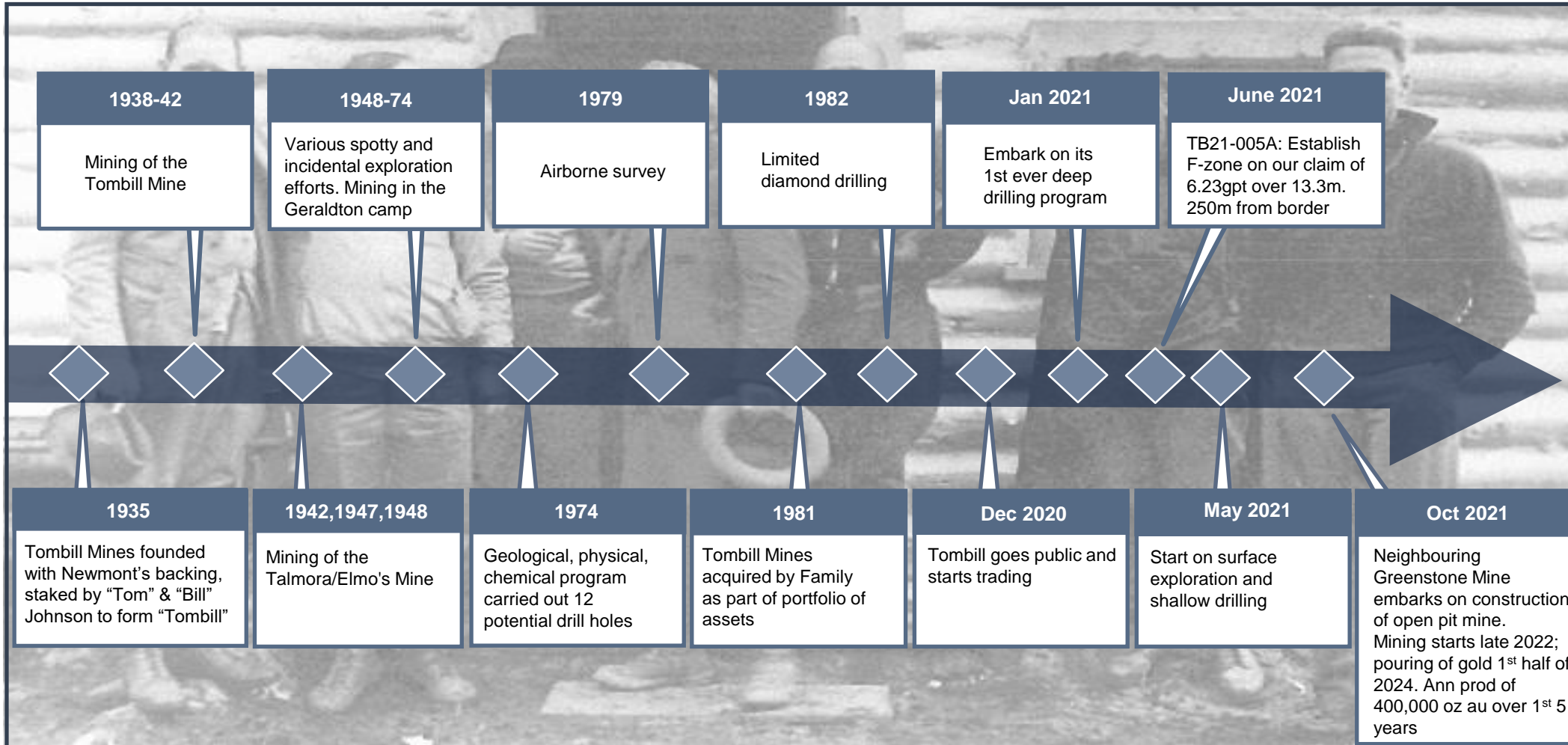
## **Reda Jalabi – IR & Corp Development**

Reda worked in Investment Banking for 7 years at JP Morgan across M&A and DCM covering Europe and the Middle East. He then joined a London-based multi family office. Graduated from the University of Pennsylvania.

# HISTORY OF TOMBILL MINES



## EVOLUTION OF GERALDTON CAMP FROM 1930'S



**Tombill founded in 1935 by "Tom" & "Bill" Johnson with help from Newmont Gold**

**Over 3Moz was mined in Geraldton Gold Camp from 1934 to 1970 over 10 separate mines**

**Very little exploration with modern methods applied to Tombill until early 2021**

**Main Insiders acquired control in 1981. Patient capital**

**F-Zone plunge on Tombill confirmed in mid-2021**